



US010622586B2

(12) **United States Patent**
Kang

(10) **Patent No.:** **US 10,622,586 B2**
(45) **Date of Patent:** ***Apr. 14, 2020**

(54) **ORGANIC LIGHT-EMITTING DISPLAY APPARATUS AND METHOD OF MANUFACTURING THE SAME**

(58) **Field of Classification Search**

None

See application file for complete search history.

(71) Applicant: **Samsung Display Co., Ltd.**, Yongin-Si,
Gyeonggi-Do (KR)

(56) **References Cited**

U.S. PATENT DOCUMENTS

6,429,584 B2 8/2002 Kubota
6,836,070 B2 12/2004 Chung et al.
(Continued)

(72) Inventor: **Tae-Wook Kang**, Yongin (KR)

(73) Assignee: **Samsung Display Co., Ltd.** (KR)

(*) Notice: Subject to any disclaimer, the term of this patent is extended or adjusted under 35 U.S.C. 154(b) by 0 days.

This patent is subject to a terminal disclaimer.

FOREIGN PATENT DOCUMENTS

CN 1702532 A 11/2005
CN 1825616 A 8/2006
(Continued)

(21) Appl. No.: **16/112,579**

OTHER PUBLICATIONS

(22) Filed: **Aug. 24, 2018**

Chinese Office Action corresponding to Chinese Patent Application No. 201410171602.3 dated Nov. 15, 2018 7 pages.

(65) **Prior Publication Data**

US 2018/0366682 A1 Dec. 20, 2018

(Continued)

Primary Examiner — Chandra Chaudhari

(74) *Attorney, Agent, or Firm* — Innovation Counsel LLP

Related U.S. Application Data

(63) Continuation of application No. 15/454,938, filed on Mar. 9, 2017, now Pat. No. 10,084,154, which is a
(Continued)

(57) **ABSTRACT**

An organic light-emitting display apparatus is provided. The display apparatus includes a pixel-defining layer disposed on a substrate, wherein the pixel-defining layer defines an emission region and a non-emission region, an organic light-emitting device disposed in the emission region, and a protruding portion disposed on a portion of the pixel-defining layer in the non-emission region. The display apparatus also includes a thin film encapsulating layer disposed on the substrate for sealing the organic light-emitting device and the protruding portion, the thin film encapsulating layer comprising at least one organic film and at least one inorganic film, wherein at least one organic film corresponds to a functional organic film, and a height of a first upper surface of the functional organic film disposed away from the protruding portion is lower than a height of

(Continued)

(30) **Foreign Application Priority Data**

Jul. 12, 2013 (KR) 10-2013-0082439

(51) **Int. Cl.**

H01L 51/52 (2006.01)

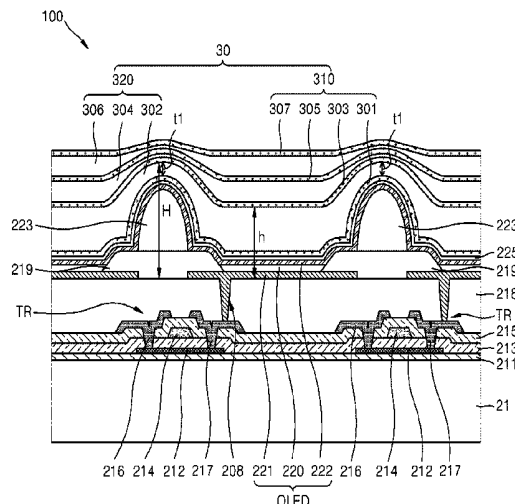
H01L 51/56 (2006.01)

(Continued)

(52) **U.S. Cl.**

CPC **H01L 51/5253** (2013.01); **H01L 27/3246** (2013.01); **H01L 27/3258** (2013.01);

(Continued)



a second upper surface of the functional organic film disposed near a top of the protruding portion.

20 Claims, 6 Drawing Sheets

Related U.S. Application Data

continuation of application No. 14/083,873, filed on Nov. 19, 2013, now Pat. No. 9,614,180.

(51) Int. Cl.

H01L 27/32 (2006.01)

H01L 27/12 (2006.01)

(52) U.S. Cl.

CPC *H01L 27/3262* (2013.01); *H01L 51/525* (2013.01); *H01L 51/5256* (2013.01); *H01L 51/56* (2013.01); *H01L 27/1248* (2013.01); *H01L 2227/323* (2013.01); *H01L 2251/301* (2013.01); *H01L 2251/558* (2013.01)

(56) References Cited

U.S. PATENT DOCUMENTS

7,453,094 B2	11/2008	Takayama
7,554,118 B2	6/2009	Kim et al.
8,049,409 B2 *	11/2011	Suh H01L 27/3246 313/504
8,237,355 B2	8/2012	Yamazaki
8,507,897 B2	8/2013	Yanagihara
8,759,822 B2	6/2014	Lee
8,835,205 B2	9/2014	Park
8,969,904 B2 *	3/2015	Chao H01L 51/0024 257/40
8,975,636 B2	3/2015	Kim et al.
9,076,745 B2	7/2015	Choi et al.

2001/0054867 A1	12/2001	Kubota
2003/0017297 A1	1/2003	Song
2003/0030369 A1	2/2003	Shih
2003/0127973 A1	7/2003	Weaver et al.
2004/0135501 A1	7/2004	Nishikawa
2004/0152390 A1	8/2004	Chung et al.
2007/0159089 A1	7/2007	Oh
2008/0018229 A1	1/2008	Yamazaki
2008/0030128 A1	2/2008	Kim
2010/0019654 A1	1/2010	Hayashi
2010/0171138 A1	7/2010	Yamazaki et al.
2011/0062444 A1	3/2011	Park et al.
2011/0221334 A1	9/2011	Kwon et al.
2013/0153939 A1	6/2013	Lee et al.
2013/0221341 A1	8/2013	Iwabuchi
2013/0248867 A1	9/2013	Kim
2013/0328480 A1	12/2013	Joo
2015/0179967 A1	6/2015	Hashimoto

FOREIGN PATENT DOCUMENTS

CN	102969456 A	3/2013
CN	104282713 B	1/2015
JP	2001-284041 A	10/2001
JP	2011-103222 A	5/2011
JP	2011-154797 A	8/2011
JP	2012-190612 A	10/2012
KR	10-2004-0042855 A	5/2004
KR	10-2010-0011900 A	2/2010
KR	10-2011-0094460 A	8/2011
KR	10-2012-0031382 A	4/2012
TW	519853 B	2/2003
TW	201310635 A1	3/2013
TW	201327801 A1	7/2013

OTHER PUBLICATIONS

Taiwanese Office Action Report, Application No. 103115141 dated Nov. 29, 2019, 6 pages.

* cited by examiner

FIG. 1

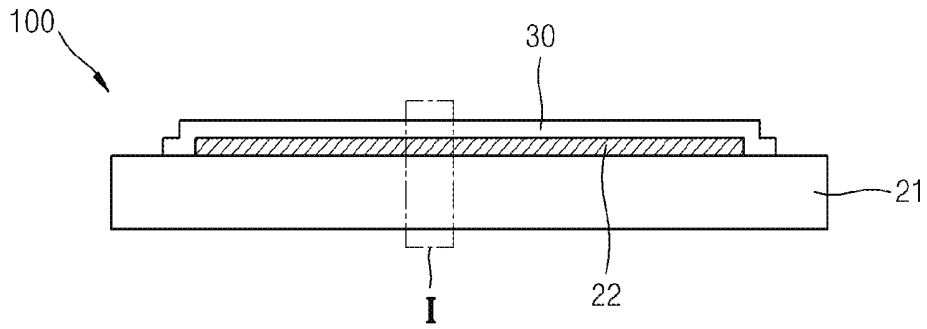


FIG. 2

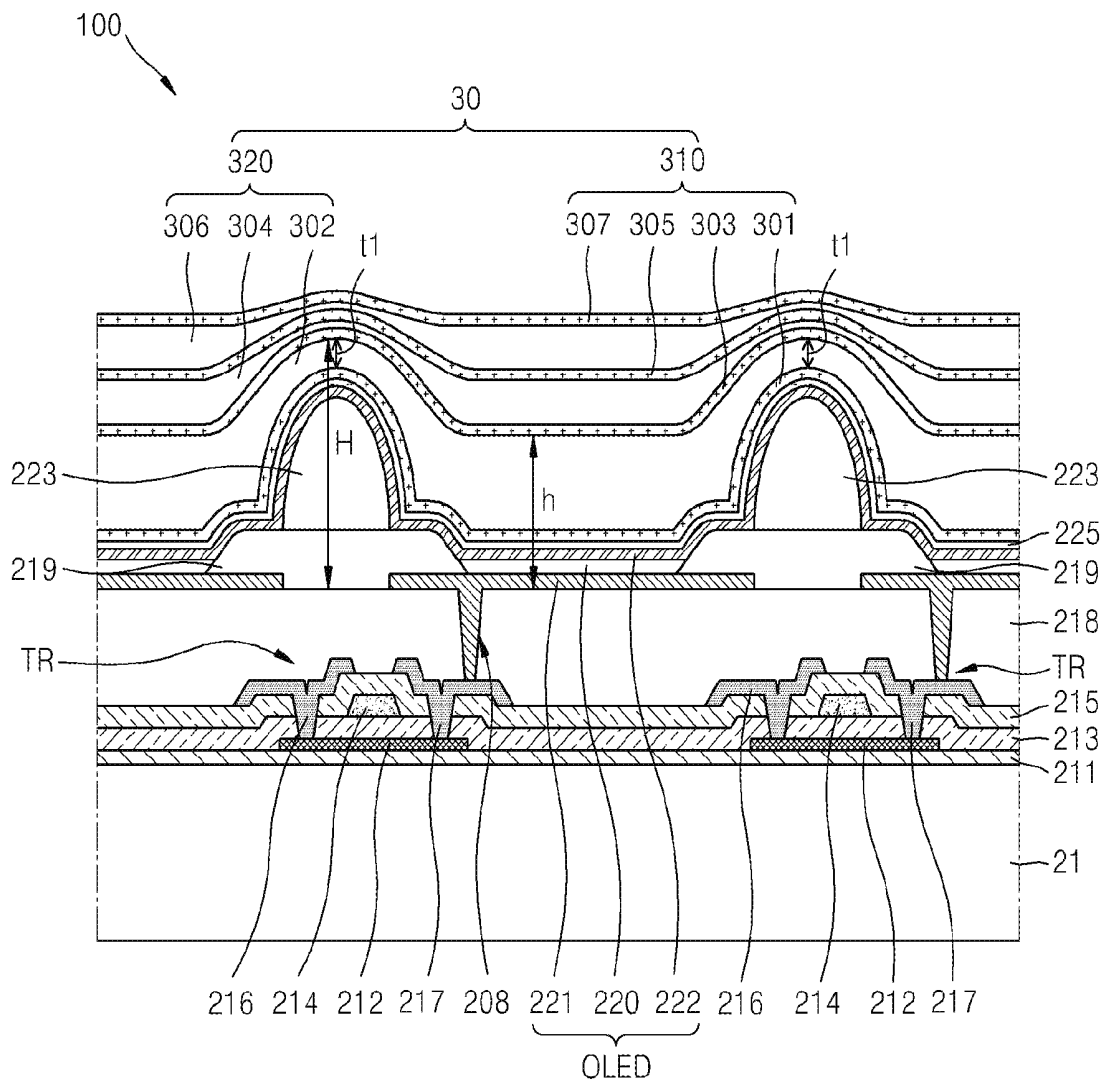


FIG. 3A

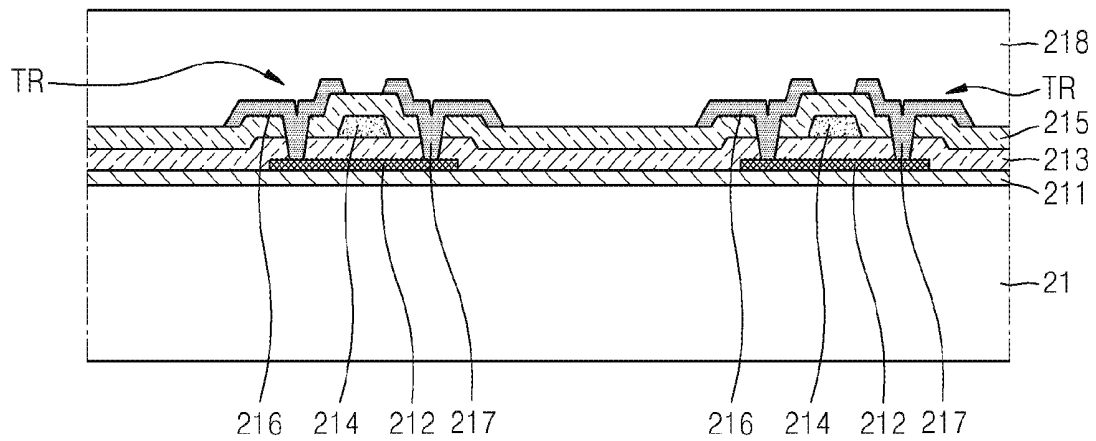


FIG. 3B

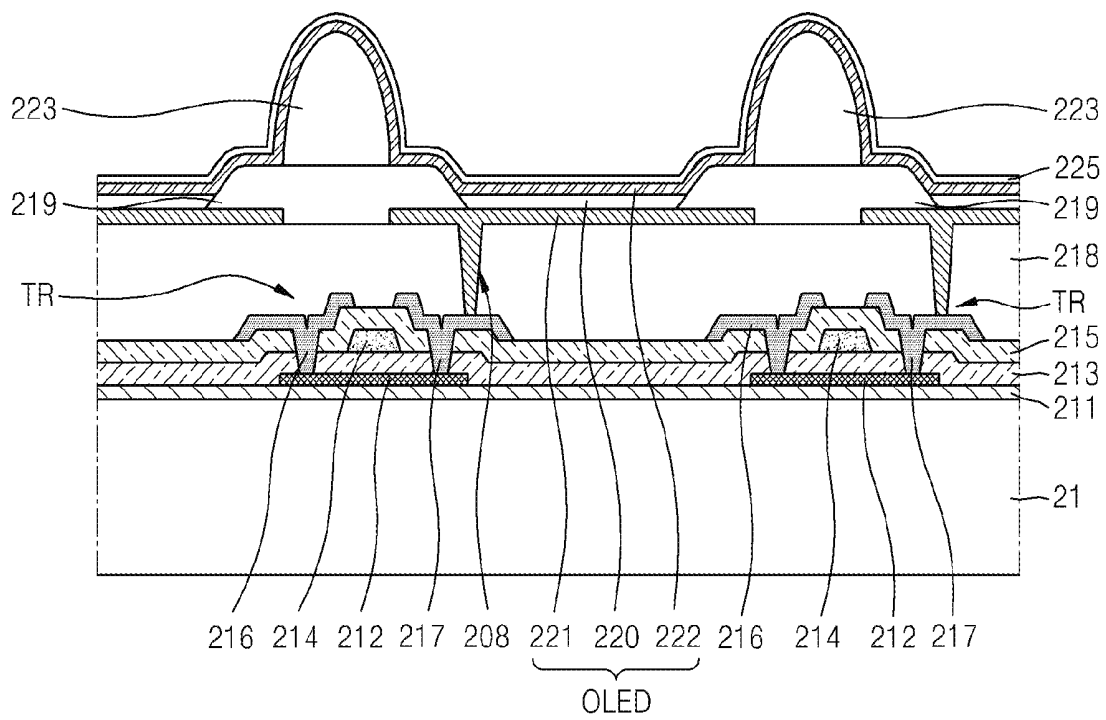


FIG. 3C

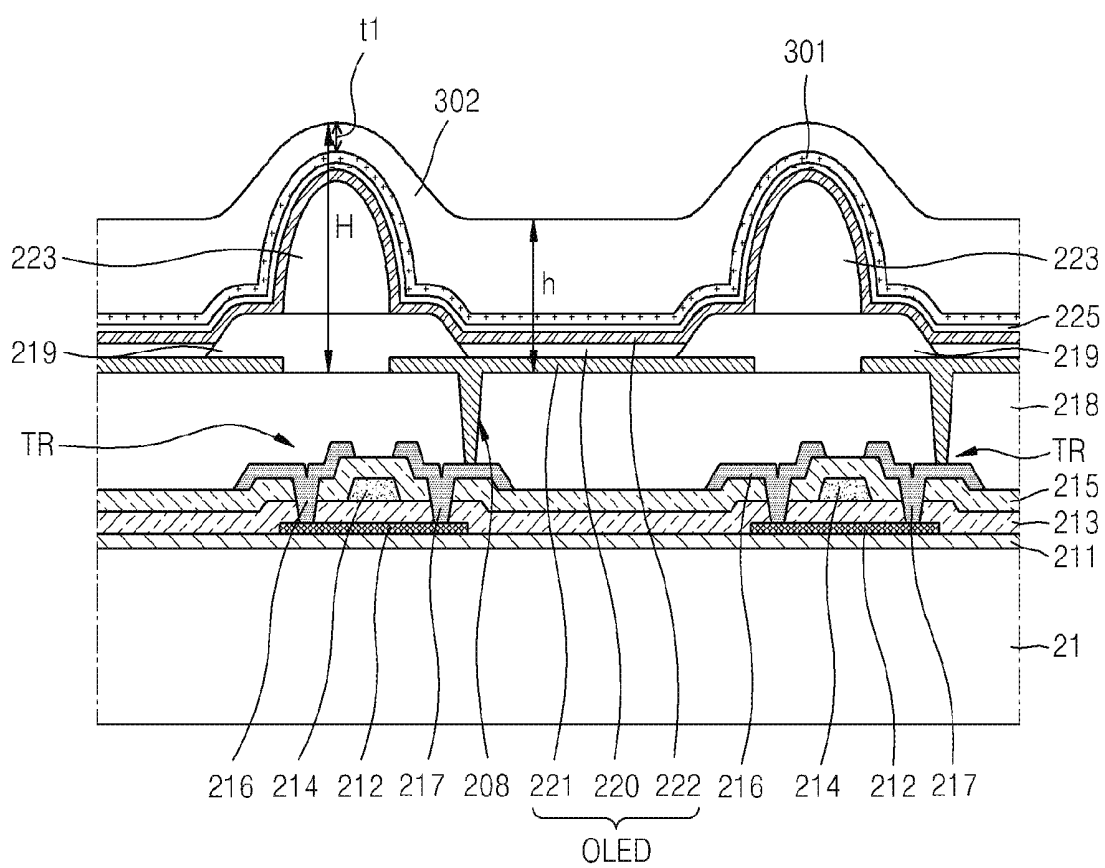


FIG. 3D

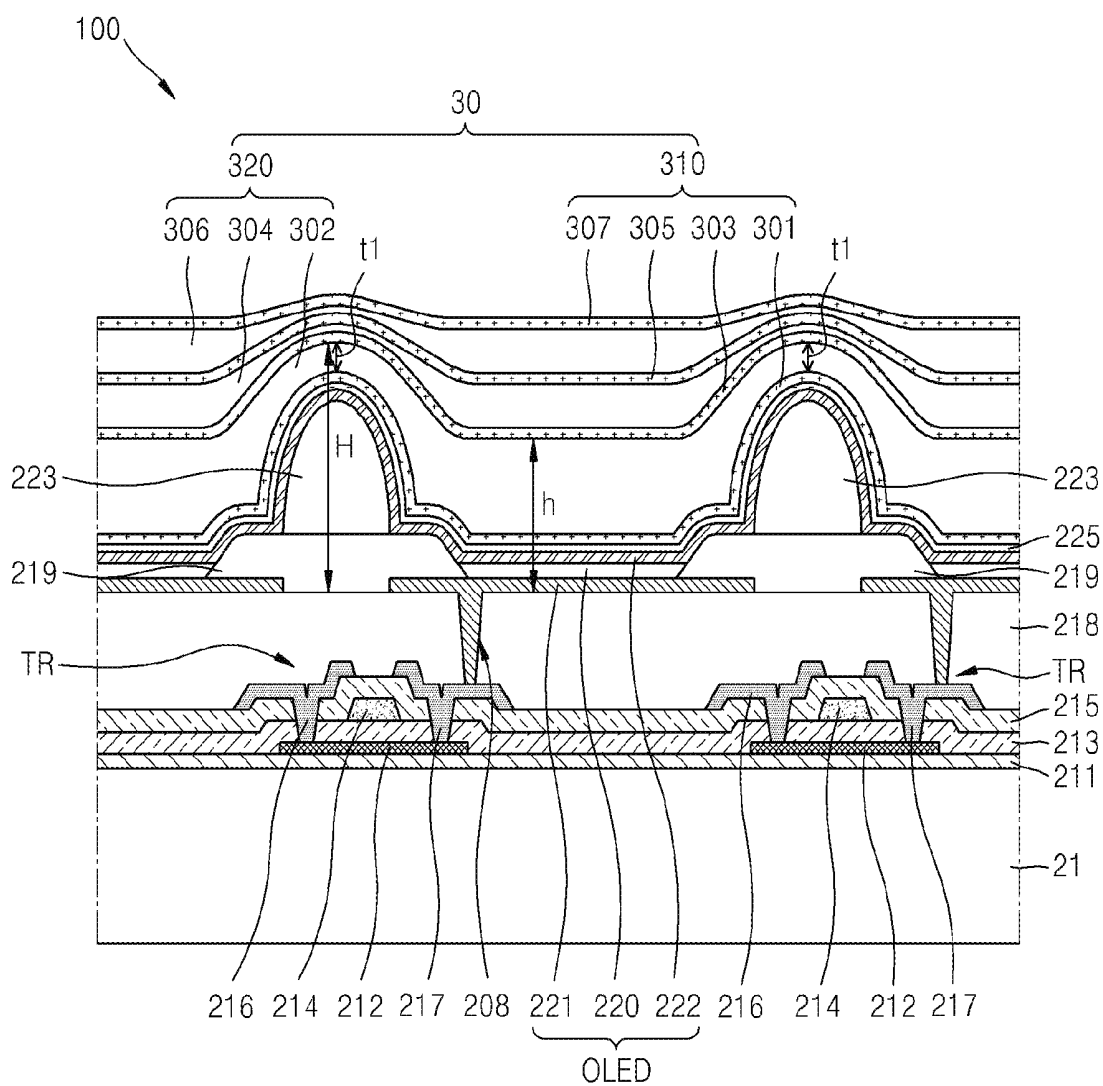
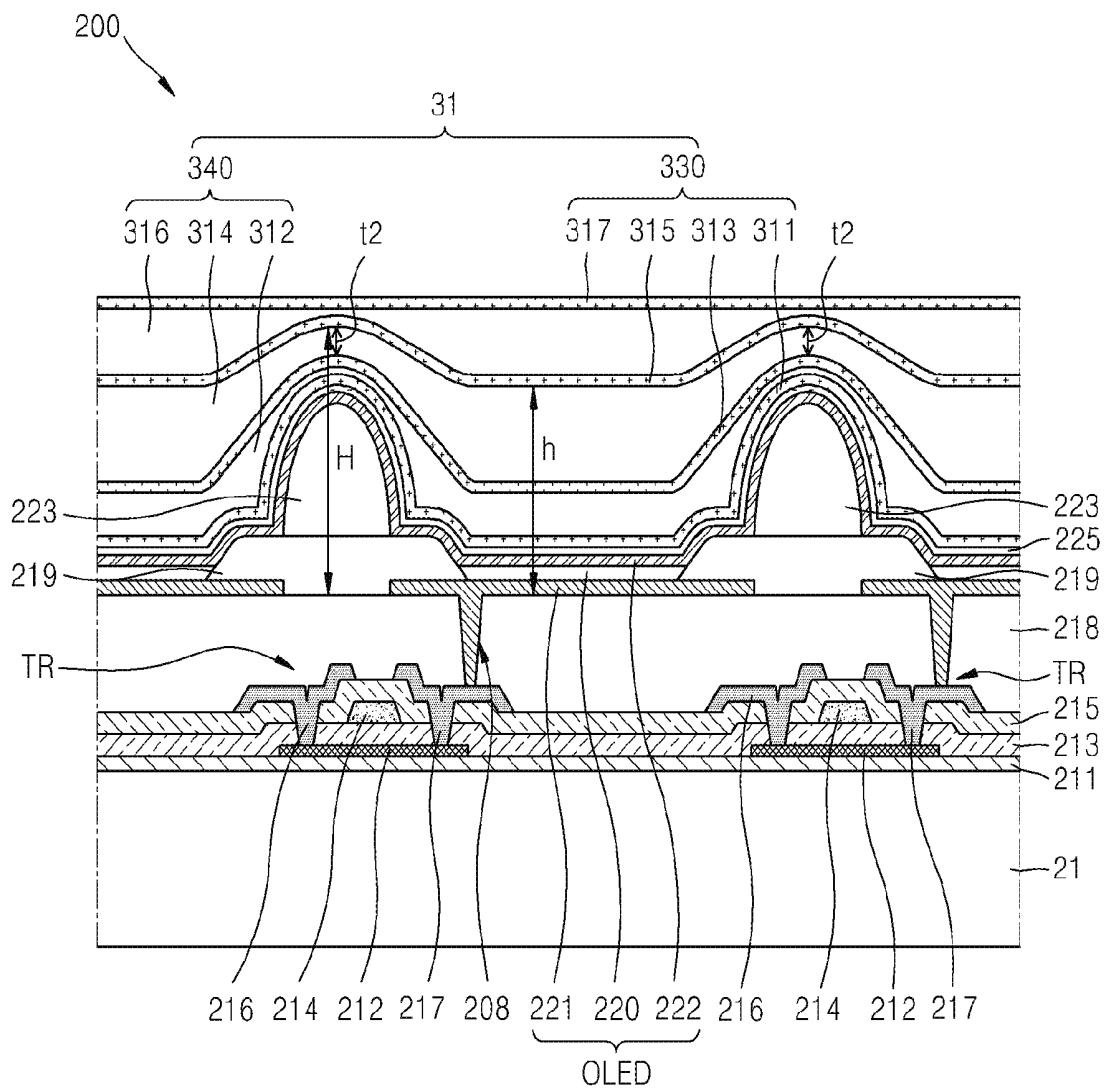


FIG. 4



ORGANIC LIGHT-EMITTING DISPLAY APPARATUS AND METHOD OF MANUFACTURING THE SAME

CROSS-REFERENCE TO RELATED APPLICATION

This application is a continuation application of U.S. patent application Ser. No. 15/454,938 filed on Mar. 9, 2017, which is a continuation application of U.S. patent application Ser. No. 14/083,873 filed on Nov. 19, 2013 (now U.S. Pat. No. 9,614,180), which claims the benefit of Korean Patent Application No. 10-2013-0082439 filed on Jul. 12, 2013, the entire contents of which are incorporated herein by reference.

BACKGROUND

1. Technical Field

The present disclosure relates to an organic light-emitting display apparatus and a method of manufacturing the organic light-emitting display apparatus.

2. Description of the Related Art

An organic light-emitting display apparatus includes an organic light-emitting device (OLED). The OLED typically includes a hole-injecting electrode, an electron-injecting electrode, and an organic emission layer disposed between the electrodes. The organic light-emitting display apparatus is a self-emissive display device that generates light when excitons (which are generated when holes from the hole-injecting electrode and electrons from the electron-injecting electrode combine in the organic emission layer) drop from an excitation state to a ground state.

Being a self-emissive display device, the organic light-emitting display apparatus does not need an additional light source, may be driven using a low voltage, and may be configured having a thin and lightweight design. Additionally, the organic light-emitting display apparatus possesses superior characteristics such as wide viewing angles, high contrast, and rapid response times. As a result of their superior characteristics, the organic light-emitting display apparatus has been identified as next-generation display apparatuses.

In a conventional organic light-emitting display apparatus, an encapsulating layer comprising an organic film may be formed sealing a protruding portion disposed on a pixel-defining layer. However, the organic film used in the conventional light-emitting display apparatus typically has low viscosity and may expose the top of the protruding portions when the organic film spreads. To ensure that the protruding portions are covered/sealed in the conventional light-emitting display apparatus, the thickness of the thin film encapsulating layer may need to be increased. Accordingly, this may result in an increase in the thickness of the conventional organic light-emitting display apparatus (i.e., thicker form factor). Furthermore, processing time and cost of the organic film material may also increase.

SUMMARY

The present disclosure is directed to address at least the above problems relating to the encapsulation of organic light-emitting devices (OLEDs) having protruding portions on a pixel-defining layer.

According to some embodiments of the inventive concept, an organic light-emitting display apparatus is provided. The organic light-emitting display apparatus includes a pixel-defining layer disposed on a substrate, wherein the pixel-defining layer defines an emission region and a non-emission region; an organic light-emitting device disposed in the emission region; a protruding portion disposed on a portion of the pixel-defining layer in the non-emission region; and a thin film encapsulating layer disposed on the substrate for sealing the organic light-emitting device and the protruding portion, the thin film encapsulating layer comprising at least one organic film and at least one inorganic film, wherein at least one organic film corresponds to a functional organic film, and a height of a first upper surface of the functional organic film disposed away from the protruding portion is lower than a height of a second upper surface of the functional organic film disposed near a top of the protruding portion.

In some embodiments, the functional organic film may have a first thickness near the top of the protruding portion, and the first thickness may have a value that is equal to or greater than about 100 Å.

In some embodiments, the first thickness may be less than or equal to a thickness of a planarized portion of the functional organic film near the top of the protruding portion.

In some embodiments, the top of the protruding portion may be disposed above the first upper surface of the functional organic film.

In some embodiments, the protruding portion may correspond to a spacer disposed in the non-emission region.

In some embodiments, the functional organic film may include a photo-initiator.

In some embodiments, the functional organic film may include a material having a viscosity that is adjustable using light or temperature.

In some embodiments, the organic light-emitting display apparatus may further include a protective layer interposed between the organic light-emitting device and the thin film encapsulating layer.

In some embodiments, the protruding portion may include foreign material.

In some embodiments, an uppermost layer of the thin film encapsulating layer may be exposed, and the uppermost layer may include an inorganic film.

In some embodiments, an uppermost layer of the thin film encapsulating layer may be exposed, and the uppermost layer may include an organic film.

In some embodiments, the organic light-emitting display apparatus may further include a plurality of functional organic films, wherein the functional organic films have different thicknesses near the top of the protruding portion.

According to some other embodiments of the inventive concept, a method of manufacturing an organic light-emitting display apparatus is provided. The method includes forming a pixel-defining layer on a substrate, wherein the pixel-defining layer defines an emission region and a non-emission region; forming an organic light-emitting device in the emission region; forming a protruding portion on a portion of the pixel-defining layer in the non-emission region; and forming a thin film encapsulating layer on the substrate for sealing the organic light-emitting device and the protruding portion, the thin film encapsulating layer comprising at least one organic film and at least one inorganic film, wherein at least one organic film corresponds to a functional organic film, and a height of a first upper surface of the functional organic film disposed away from the

protruding portion is lower than a height of a second upper surface of the functional organic film disposed near a top of the protruding portion.

In some embodiments, the method may further include forming the functional organic film by depositing or coating a liquid pre-functional organic film, and adjusting a viscosity of the liquid pre-functional organic film.

In some embodiments, adjusting the viscosity of the liquid pre-functional organic film may include adjusting the viscosity by adjusting a temperature of the substrate or by irradiating light onto the liquid pre-functional organic film.

In some embodiments, the method may include forming the protruding portion and the pixel-defining layer using a half-tone mask process.

In some embodiments, the functional organic film may include a photo-initiator.

In some embodiments, the method may include forming the organic film using flash evaporation or inkjet printing.

BRIEF DESCRIPTION OF THE DRAWINGS

FIG. 1 is a cross-sectional view of an organic light-emitting display apparatus according to an embodiment of the inventive concept.

FIG. 2 is a magnified cross-sectional view of portion I of the organic light-emitting display apparatus in FIG. 1.

FIGS. 3A through 3D are cross-sectional views illustrating an exemplary method of manufacturing the organic light-emitting display apparatus in FIG. 2.

FIG. 4 is a cross-sectional view of an organic light-emitting display apparatus according to another embodiment of the inventive concept.

FIG. 5 is a cross-sectional view of an organic light-emitting display apparatus according to a further embodiment of the inventive concept.

DETAILED DESCRIPTION

The inventive concept will be described more fully with reference to the accompanying drawings, in which different embodiments are shown. Like reference numerals in the drawings denote like elements, and thus a repeated description of those similar elements will be omitted. In the drawings, the lengths and sizes of elements may have been exaggerated for clarity and convenience of description.

It should be noted that the inventive concept may be embodied in many different forms and should not be construed as being limited to the disclosed embodiments. Also, it will be understood that when a layer is referred to as being “on” or “on the top of” another layer, the layer can be disposed directly on the other layer, or disposed on the other layer with one or more intervening layers being present.

The terminology used herein is for describing particular embodiments and is not intended to limit the inventive concept. As used herein, the singular forms “a”, “an” and “the” are intended to include the plural forms as well, unless the context clearly indicates otherwise. It will be further understood that the terms “comprises,” “comprising,” “includes,” and/or “including,” when used herein, specify the presence of stated steps, operations, and/or elements, but do not preclude the presence or addition of one or more other steps, operations, and/or elements. It will be understood that, although the terms, “first”, “second”, etc. may be used herein to describe various elements, these elements should not be limited by these terms. These terms are only used to distinguish one element from another.

As used herein, the term “and/or” includes any and all combinations of one or more of the associated listed items. Expressions such as “at least one of,” when preceding a list of elements, modify the entire list of elements and do not modify the individual elements of the list.

FIG. 1 is a cross-sectional view of an organic light-emitting display apparatus according to an embodiment.

Referring to FIG. 1, an organic light-emitting display apparatus 100 includes an organic emissive portion 22 disposed on a substrate 21 and a thin film encapsulating layer 30 for sealing the organic emissive portion 22.

The organic emissive portion 22 includes a plurality of organic light-emitting devices capable of emitting red, green, blue, or white light. The organic emissive portion 22 may display an image via the organic light-emitting devices.

The thin film encapsulating layer 30 may be formed of a transparent material which allows an observer to view the image from the organic emissive portion 22. The thin film encapsulating layer 30 may cover the upper and side surfaces of the organic emissive portion 22, thus preventing air and moisture from reaching the organic emissive portion 22.

FIG. 2 is a magnified cross-sectional view of portion I of the organic light-emitting display apparatus 100 in FIG. 1.

Referring to FIG. 2, the organic light-emitting display apparatus 100 includes a substrate 21, a pixel-defining layer 219, an organic light-emitting device OLED, a protruding portion 223, and a thin film encapsulating layer 30. The organic light-emitting display apparatus 100 may further include a buffer film 211, a thin film transistor (TFT) TR, and a protective layer 225.

The substrate 21 may be formed of a transparent glass material (e.g., having silicon dioxide (SiO₂) as a main component). However, the substrate 21 is not limited to transparent glass materials. In some embodiments, the substrate 21 may be formed of other materials such as ceramic, transparent plastic, or metal. In some further embodiments, the substrate 21 may be a flexible substrate that is bendable.

The buffer film 211 acts as a barrier layer, and prevents impurity ions in the substrate 21 from diffusing to layers disposed on the top surface of the substrate 21. The buffer film 211 also protects the substrate 21 from air and moisture in the ambient environment. Additionally, the buffer film 211 provides a planar surface on which subsequent layers can be deposited. In some embodiments, the buffer film 211 may be formed of an inorganic material such as silicon oxide, silicon nitride, silicon oxynitride, aluminum oxide, aluminum nitride, titanium oxide, or titanium nitride. In other embodiments, the buffer film 211 may be formed of an organic material such as polyimide, polyester, or acryl, or a stack thereof. In some particular embodiments, the buffer film 211 may be omitted. The buffer film 211 may be formed using deposition methods such as plasma-enhanced chemical vapor deposition (PECVD), atmospheric pressure CVD (APCVD), or low pressure CVD (LPCVD).

The TFT TR includes an active layer 212, a gate electrode 214, a source electrode 216, and a drain electrode 217. As shown in FIG. 2, the gate electrode 214 and the active layer 212 are insulated from each other by a gate insulating film 213 interposed between the gate electrode 214 and the active layer 212.

The active layer 212 is disposed on the buffer film 211. The active layer 212 may be formed of an inorganic semiconductor (such as amorphous silicon or poly-silicon) or an organic semiconductor. In some embodiments, the active layer 212 may be formed of an oxide semiconductor. An oxide semiconductor may include an oxide formed from one or more Groups 12, 13, and 14 metal elements (such as zinc

(Zn), indium (In), gallium (Ga), tin (Sn), cadmium (Cd), germanium (Ge), and hafnium (Hf)).

The gate insulating film **213** is disposed on the buffer film **211** covering the active layer **212**, and the gate electrode **214** is disposed on the gate insulating film **213**.

An interlayer insulating film **215** is disposed on the gate insulating film **213** covering the gate electrode **214**. The source electrode **216** and the drain electrode **217** are disposed on the interlayer insulating film **215**. Also, the source and drain electrodes **216** and **217** contact the active layer **212** through contact holes formed in the interlayer insulating film **215** and gate insulating film **213**.

It should be noted that the TFT TR is not limited to the above-described structure, and may include other types of structure. In the embodiment of FIG. 2, the TFT TR is depicted having a top gate structure. In other embodiments, the TFT TR may have a bottom gate structure in which the gate electrode **214** is disposed beneath the active layer **212**.

In some embodiments, a pixel circuit including a capacitor (not shown) may be formed along with the TFT TR.

A planarization film **218** is disposed on the interlayer insulating film **215** covering the TFT TR. The planarization film **218** serves to reduce stepped portions created by the underlying layers, and provides a planar surface on which the organic light-emitting device OLED is formed. As a result of the planar surface, the light emission efficiency of the OLED may be improved. As shown in FIG. 2, a through-hole **208** may be formed in the planarization film **218** to expose a portion of the drain electrode **217**.

The planarization film **218** may be formed of an insulating material. In some embodiments, the planarization film **218** may be formed as a single layer or multi-layered structure comprising an inorganic material, an organic material, or a combination of organic/inorganic materials. In some embodiments, the planarization film **218** may include at least one of the following resins: acrylic resin, epoxy resin, phenolic resin, polyimide-based resin, polyimide-based resin, unsaturated polyester-based resin, polyphenylene-based resin, polyphenylenesulfide-based resin, and benzocyclobutene (BCB).

In some particular embodiments, the planarization film **218** and/or interlayer insulating film **215** may be omitted.

The pixel-defining layer **219** includes (and also defines) an emission region and a non-emission region. The organic light-emitting device OLED is disposed in the emission region of the pixel-defining layer **219**. The organic light-emitting device OLED is disposed on the planarization film **218**, and includes a first electrode **221**, an organic emission layer **220**, and a second electrode **222**. The pixel-defining layer **219** is disposed on the first electrode **221** of the organic light-emitting device OLED, and includes an opening exposing the first electrode **221**. The opening may correspond to the emission region of the pixel-defining layer **219**.

An organic emission layer **220** is disposed in the emission region of the pixel-defining layer **219**. As shown in FIG. 2, the organic emission layer **220** is disposed on the first electrode **221** in the opening of the pixel-defining layer **219**, and may extend onto a side portion of the pixel-defining layer **219**.

The pixel-defining layer **219** may be formed of an organic material (e.g., photoresist, polyacrylic resin, polyimide-based resin, or acrylic resin) or an inorganic material (e.g., a silicon compound).

In some embodiments, the organic emission layer **220** may be formed of a low-molecular-weight organic material. In those embodiments, the organic emission layer **220** may be formed as a single layer or multi-layered structure. The

multi-layered structure may include a hole injection layer (HIL), a hole transport layer (HTL), an electron transport layer (ETL), an electron injection layer (EIL), and other layers stacked together with an emission layer (EML) as the center layer. The low-molecular-weight organic material may be deposited using vacuum deposition. The EML may be independently formed for each of the red, green, blue, and white pixels. The HIL, HTL, ETL, and EIL are blanket layers disposed over the substrate **21**, and are therefore common to the red, green, blue, and white pixels.

In some embodiments, the organic emission layer **220** may be formed of a high-molecular-weight organic material. In those embodiments, the organic emission layer **220** may include a HTL and an EML disposed on the first electrode **221**. The HTL may be formed of poly-(2,4)-ethylene-dihydroxy thiophene (PEDOT) or polyaniline (PANI) using an inkjet printing or spin coating method. Examples of a high-molecular-weight organic material include poly-phenylene vinylene (PPV)-based organic materials and poly-fluorene-based organic materials. A color pattern in the organic emission layer **220** may be formed using inkjet printing, spin coating, or laser-induced thermal imaging.

The HIL may be formed of a phthalocyanine compound (such as copper phthalocyanine) or a starburst-type amine derivative (such as TCTA, m-MTDATA, or m-MTDAPB).

The HTL may be formed of N,N'-bis(3-methylphenyl)-N,N'-diphenyl-[1,1-biphenyl]-4,4'-diamine (TPD) or N,N'-di(naphthalene-1-yl)-N,N'-diphenyl benzidine (α -NPD).

The EIL may be formed of LiF, NaCl, CsF, Li₂O, BaO, or Liq.

The ETL may be formed of Alq₃.

The EML may include a host material and a dopant material.

Examples of a host material include tris(8-hydroxyquinolino)aluminum (Alq₃), 9,10-di(naphthyl-2-yl)anthracene (AND), 3-Tert-butyl-9,10-di(naphthyl-2-yl)anthracene (TBADN), 4,4'-bis(2,2-diphenyl-ethene-1-yl)-4,4'-dimethylphenyl (DPVBi), 4,4'-bis(2,2-diphenyl-ethene-1-yl)-4,4'-dimethylphenyl(p-DMDPVBi), Tert(9,9-diarylfuorene)s (TDAF), 2-(9,9'-spirobifluorene-2-yl)-9,9'-spirobifluorene (BSDF), 2,7-bis(9,9'-spirobifluorene-2-yl)-9,9'-spirobifluorene (TSDF), bis(9,9-diarylfuorene)s (BDAF), 4,4'-bis(2,2-diphenyl-ethene-1-yl)-4,4'-di-(tert-butyl)phenyl (p-TD-PVBi), 1,3-bis(carbazole-9-yl)benzene (mCP), 1,3,5-tris(carbazole-9-yl)benzene (tCP), 4,4',4"-tris(carbazole-9-yl)triphenylamine (TcTa), 4,4'-bis(carbazole-9-yl)biphenyl (CBP), 4,4'-bis(9-carbazolyl)-2,2'-dimethyl-biphenyl (CBDP), 4,4'-bis(carbazole-9-yl)-9,9-dimethyl-fluorene (DMFL-CBP), 4,4'-bis(carbazole-9-yl)-9,9-bis(9-phenyl-9H-carbazole)fluorene (FL-4CBP), 4,4'-bis(carbazole-9-yl)-9,9-di-tolyl-fluorene (DPFL-CBP), or 9,9-bis(9-phenyl-9H-carbazole)fluorene (FL-2CBP).

Examples of a dopant material include 4,4-bis[4-(di-p-tolylamino)styryl]biphenyl (DPAVB), 9,10-di-(2-naphthyl)anthracene (ADN), or 2-(t-butyl)-9,10-bis(2'-naphthyl)anthracene (TBADN).

The first electrode **221** is disposed on the planarization film **218**. The first electrode **221** may be electrically connected to the drain electrode **217** of the TFT TR via the through-hole **208** in the planarization film **218**.

The second electrode **222** is disposed on the organic emission layer **220**, and may be disposed covering all pixels.

The first electrode **221** may function as an anode, and the second electrode **222** may function as a cathode. However, the inventive concept is not limited to the above configuration. In some embodiments, the polarities of the first electrode **221** and the second electrode **222** may be reversed,

such that the first electrode **221** may function as a cathode, and the second electrode **222** may function as an anode.

When the first electrode **221** functions as an anode, the first electrode **221** may include materials having a high work function (e.g., ITO, IZO, ZnO, or In_2O_3). When the organic light-emitting display apparatus **100** is a top emission type (in which an image is formed away from the substrate **21**), the first electrode **221** may further include a reflective film formed of a metal such as silver (Ag), magnesium (Mg), aluminum (Al), platinum (Pt), palladium (Pd), gold (Au), nickel (Ni), neodymium (Nd), iridium (Ir), chromium (Cr), lithium (Li), ytterbium (Yb), calcium (Ca), or a combination thereof. Also, the first electrode **221** may be formed as a single layer or a multi-layered structure. In some embodiments, the first electrode **221** may be a reflective electrode having an ITO/Ag/ITO structure.

When the second electrode **222** functions as a cathode, the second electrode **222** may be formed of a metal such as Ag, Mg, Al, Pt, Pd, Au, Ni, Nd, Ir, Cr, Li, Ca, or a combination thereof. When the organic light-emitting display apparatus **100** is a top emission type, the second electrode **222** has to be transparent in order to transmit light. Accordingly, in some embodiments, the second electrode **222** may include a transparent conductive metal oxide such as ITO, IZO, ZTO, ZnO, or In_2O_3 . Alternatively, the second electrode **222** may be a thin film including at least one of the following elements or compounds: Li, Ca, LiF/Ca, LiF/Al, Al, Ag, Mg, or Yb. The second electrode **222** may be formed as a single layer or a multi-layered structure including Mg:Ag, Ag:Yb, and/or Ag.

The second electrode **222** may be formed having a configuration that allows a common voltage to be applied to all pixels.

The protruding portion **223** is disposed on a portion of the pixel-defining layer **219**. The protruding portion **223** may constitute a spacer that is disposed in the non-emission region of the pixel-defining layer **219**. The spacer serves to separate adjacent organic light-emitting device OLEDs. It should be noted that the protruding portion **223** is not limited to the above-described configuration. In some embodiments, the protruding portion **223** may include any structure (that is disposed on the pixel-defining layer **219**) protruding above the organic light-emitting device OLED. In some embodiments, the protruding portion **223** may include foreign material (e.g. foreign particles) that is disposed on the pixel-defining layer **219** during the manufacturing process.

The protruding portion **223** may be formed of an organic material (e.g., photoresist, polyacrylic resin, polyimide-based resin, or acrylic resin) or an inorganic material (e.g., spin on glass (SOG)).

In the above-described embodiment, the organic emission layer **220** is formed in the opening of the pixel-defining layer **219** and includes light-emitting material for each independent pixel. Nevertheless, the inventive concept is not limited to the above-described configuration. In some other embodiments, the organic emission layer **220** may be formed over the entire planarization film **218** regardless of the positions of the pixels. In those other embodiments, the organic emission layer **220** may be formed, for example, by: (1) vertically stacking layers including light-emitting materials that emit red, green, and blue light; or (2) mixing light-emitting materials that emit red, green, and blue light. Different colors may be combined to produce white light. In some embodiments, the organic light-emitting display apparatus **100** may include a color conversion layer for converting the emitted white light to a particular color, or a color filter for filtering a particular color.

The thin film encapsulating layer **30** seals the organic light-emitting device OLED and the protruding portion **223**. The thin film encapsulating layer **30** includes an organic film **320** and an inorganic film **310**. It should be noted that the thin film encapsulating layer **30** can include a plurality of organic films **320** and inorganic films **310**.

In some embodiments, the films within the organic film **320** and the inorganic film **310** may be alternately disposed (in the thin film encapsulating layer **30**).

Referring to FIG. 2, the thin film encapsulating layer **30** may include a first inorganic film **301**, a functional organic film **302**, a second inorganic film **303**, a first organic film **304**, a third inorganic film **305**, a second organic film **306**, and a fourth inorganic film **307** that are sequentially stacked together. Accordingly, the inorganic film **310** includes the first to fourth inorganic films **301**, **303**, **305**, and **307**. The organic film **320** includes the functional organic film **302**, and the first and second organic films **304** and **306**.

The inorganic film **310** may be formed as a single film or stacked film including a metal oxide or metal nitride. For example, the inorganic film **310** may include at least one of the following metal oxides or nitrides: SiN_x , Al_2O_3 , SiO_2 , TiO_2 , SiON, ITO, AZO, ZnO, or ZrO.

As shown in FIG. 2, the fourth inorganic film **307** constitutes the uppermost layer of the thin film encapsulating layer **30** that is exposed to the ambient environment. The fourth inorganic film **307** is formed of an inorganic material, and prevents air and moisture from reaching the organic light-emitting device OLED. Nevertheless, in some other embodiments, the uppermost layer of the thin film encapsulating layer **30** (that is exposed to the ambient environment) may be formed of an organic material.

The organic film **320** may be formed as a single layer or stacked layer comprising at least one of the following polymers: polyethylene terephthalate, polyimide, polycarbonate, epoxy, polyethylene, or polyacrylate. The organic film **320** may also be formed of a high molecular monomer component including a monoacrylate-based monomer, diacrylate-based monomer, or a triacrylate-based monomer.

It should be noted that the structure of the thin film encapsulating layer **30** is not limited to the embodiment depicted in FIG. 2. In some embodiments, the thin film encapsulating layer **30** may include a structure having a plurality of sequentially stacked organic films. In other embodiments, the thin film encapsulating layer **30** may include a structure having a plurality of sequentially stacked inorganic films. In some particular embodiments, at least one of the organic films **320** and/or inorganic films **310** may be omitted from the thin film encapsulating layer **30**.

The functional organic film **302** may be fully covered by the second inorganic film **303**. The functional organic film **302** may be formed having a first thickness t_1 near the top of the protruding portion **223**.

In a conventional light-emitting display apparatus, an encapsulating layer comprising an organic film may be formed sealing a protruding portion disposed on a pixel-defining layer. However, the organic film used in the conventional light-emitting display apparatus typically has low viscosity and may expose the top of the protruding portions when the organic film spreads. To ensure that the protruding portions are covered/sealed in the conventional light-emitting display apparatus, the thickness of the thin film encapsulating layer may need to be increased. Accordingly, this may result in an increase in the thickness of the conventional organic light-emitting display apparatus (i.e., thicker form factor). Furthermore, processing time and cost of the organic film material may also increase.

The functional organic film **302** according to the inventive concept can address the above problems relating to the encapsulating layer in a conventional light-emitting display apparatus. As shown in FIG. 2, the functional organic film **302** may be formed covering the protruding portion **223**, and having a thickness **t1** near the top of the protruding portion **223**. In some embodiments, the functional organic film **302** may have a maximum thickness of about 3 μm . In particular, it should be noted that the thickness of the functional organic film **302** can vary depending on the height of the protruding portion **223**.

The functional organic film **302** may be formed of a material having a viscosity that is adjustable using light or temperature. By adjusting the viscosity of the functional organic film **302**, the functional organic film **302** may be formed having the first thickness **t1** near the top of the protruding portion **223**.

The first thickness **t1** may be adjusted such that the second inorganic film **303** (which is formed on the functional organic film **302**) does not come into direct contact with the protruding portion **223** even when a defect (e.g., a mask stab) arises during the fabrication of the second electrode **222**, protective layer **225**, or first inorganic film **301** on the protruding portion **223**. In some embodiments, the first thickness **t1** may be equal or greater than about 100 \AA . For example, the first thickness **t1** may have a value ranging between about 100 \AA and about 500 \AA . In some embodiments, the first thickness **t1** may have a value that is less than or equal to a thickness of a substantially planar portion of the functional organic film **302** near the top of the protruding portion **223**.

As shown in FIG. 2, the height of the upper surface of the functional organic film **302** may vary at different locations of the organic light-emitting display apparatus **100**.

Referring to FIG. 2, a height **h** is measured from a top surface of the planarization film **218** to a first upper surface of the functional organic film **302** disposed away from the protruding portion **223**. A height **H** is measured from the top surface of the planarization film **218** to a second upper surface of the functional organic film **302** near the top of a protruding portion **223**. As shown in FIG. 2, the height **h** may be less than the height **H**, such that the top of the protruding portion **223** protrudes above the first upper surface of the functional organic film **302**. In other words, the height **h** of the first upper surface of the functional organic film disposed away from the protruding portion is lower than the height **H** of the second upper surface of the functional organic film disposed near the top of the protruding portion. Accordingly, the protruding portion **223** may be covered by a functional organic film **302** having a low first thickness **t1**, thereby reducing the thickness of the organic light-emitting display apparatus **100**.

In some embodiments, the functional organic film **302** may be formed of polyacrylate. For example, the functional organic film **302** may be formed of a high molecular monomer component including a monoacrylate-based monomer, a diacrylate-based monomer, or a triacrylate-based monomer. In the above embodiments, the functional organic film **302** is formed by lowering the temperature of the substrate **21** to increase the viscosity of the functional organic film **302**. As such, the viscosity of the functional organic film **302** may be adjusted by varying the temperature of the substrate **21**.

In some other embodiments, the monomer component of the functional organic film **302** may include a photo-initiator such as 2,4,6-Trimethylbenzoyl-diphenyl-phosphineoxide (TPO). When the functional organic film **302** includes a

photo-initiator, a cross-linking reaction may occur when light is irradiated onto the functional organic film **302**. The cross-linking reaction increases the viscosity of the functional organic film **302**. The viscosity of the functional organic film **302** may be adjusted according to the wavelength or/and amount of the light irradiated.

In the embodiment of FIG. 2, the functional organic film **302** is formed as a single layer. In some embodiments (not shown), the functional organic film **302** may include a plurality of layers having different viscosities.

The protective layer **225** is interposed between the organic light-emitting device OLED and the thin film encapsulating layer **30**. The protective layer **225** protects the organic light-emitting device OLED from damage during the formation of the thin film encapsulating layer **30**. In some embodiments, the protective layer **225** may include a metal halide such as lithium fluoride (LiF).

FIGS. 3A through 3D are cross-sectional views illustrating an exemplary method of manufacturing the display apparatus **100** of FIG. 2.

Referring to FIG. 3A, a buffer film **211** is formed on a substrate **21**.

The buffer film **211** may be formed using various deposition methods such as PECVD, APCVD, or LPCVD. In some embodiments, a planarization process may be performed on the substrate **21** prior to forming the buffer film **211** on the substrate **21**. The planarization process may include, for example, performing chemical mechanical polishing and/or etch-back of the substrate **21**, so as to yield a substantially flat top surface.

Next, an active layer **212** is formed on the buffer film **211**. The active layer **212** may be formed of an inorganic semiconductor (such as amorphous silicon or poly-silicon) or an organic semiconductor. In some embodiments, the active layer **212** may be formed of an oxide semiconductor. The active layer **212** may be formed using PECVD, APCVD, or LPCVD. The active layer **212** may be formed first as a blanket layer on the buffer film **211**, and subsequently patterned using a mask. In some embodiments, a crystallization process (e.g. crystal growth of a seed layer to form the active layer **212**) may be performed.

Next, a gate insulating film **213** is formed on the buffer film **211** covering the active layer **212**. The gate insulating film **213** may be formed (having a substantially uniform thickness) on the buffer film **211** along a profile of the active layer **212**.

Next, a gate electrode **214** is formed on the gate insulating film **213**. Specifically, the gate electrode **214** is formed on a portion of the gate insulating film **213** (above the underlying active layer **212**). The gate electrode **214** may be formed of a metal, an alloy, a metal nitride, a conductive metal oxide, or a transparent conductive material.

Next, an interlayer insulating film **215** is formed on the gate insulating film **213** covering the gate electrode **214**. The interlayer insulating film **215** may be formed (having a substantially uniform thickness) on the gate insulating film **213** along a profile of the gate electrode **214**. The interlayer insulating film **215** may include a silicon compound. Contact holes are etched through the interlayer insulating film **215** and the gate insulating film **213**, so as to expose portions of the active layer **212**.

Next, a source electrode **216** and a drain electrode **217** are formed on the interlayer insulating film **215**. The source/drain electrodes **216** and **217** are spaced apart from each other by a predetermined interval with reference to the gate electrode **214**, and are disposed adjacent to the gate electrode **214**. The source/drain electrodes **216** and **217** are

formed filling the contact holes, so as to contact both ends of the active layer **212**. The source electrode **216** and the drain electrode **217** may be formed of a metal, an alloy, a metal nitride, a conductive metal oxide, or a transparent conductive material.

In some embodiments, a conductive film (not shown) may be formed on the interlayer insulating film **215** (with the conductive film filling the contact holes), and patterned to form the source/drain electrodes **216** and **217**.

Next, a planarization film **218** is formed on the interlayer insulating film **215** covering the source electrode **216** and drain electrode **217**. The planarization film **218** may be formed having a thickness sufficient to completely cover the source/drain electrodes **216** and **217**. The planarization film **218** may be formed of an inorganic material and/or an organic material. The planarization film **218** may be formed using various methods such as spin coating, printing, sputtering, CVD, atomic layer deposition (ALD), PECVD, high density plasma-CVD (HDP-CVD), or vacuum deposition, depending on the type of material that is used to form the planarization film **218**.

Referring to FIG. 3B, an organic light-emitting device OLED, a pixel-defining layer **219**, and a protruding portion **223** are formed on the planarization film **218**. As mentioned previously, the protruding portion **223** functions as a spacer separating adjacent OLEDs.

The OLED includes a first electrode **221**, an organic emission layer **220**, and a second electrode **222**. First, a through-hole **208** is formed in the planarization film **218**, so as to expose a portion of the drain electrode **217**. Next, the first electrode **221** is formed on the planarization film **218**, with the first electrode **221** filling the through-hole **208**. The first electrode **221** is electrically connected to the drain electrode **217** of the TFT TR via the through-hole **208**.

The first electrode **221** may include a reflective material. For example, the first electrode **221** may include Ag, Mg, Al, Pt, Pd, Au, Ni, Nd, Ir, Cr, Li, Yb, or Ca, or a combination thereof. Also, the first electrode **221** may be formed as a single layer or a multi-layered structure. In some embodiments, the first electrode **221** may be formed as a reflective electrode having an ITO/Ag/ITO structure.

The first electrode **221** may be formed using sputtering, vacuum deposition, CVD, pulse laser deposition, printing, or ALD. The first electrode **221** may be patterned corresponding to the pixels.

Next, to form the pixel-defining layer **219**, a pre-pixel-defining layer (not shown) is formed on the planarization film **218** and the first electrode **221**. The pre-pixel-defining layer may be formed using an organic material or an inorganic material. The pre-pixel-defining layer may be formed using spin coating, printing, sputtering, CVD, ALD, PECVD, HDP-CVD, or vacuum deposition, depending on the type of material that is used to form the pre-pixel-defining layer.

The pixel-defining layer **219** is formed by etching an opening in the pre-pixel-defining layer to expose a portion of the first electrode **221**. As mentioned previously, the pixel-defining layer **219** defines an emission region and a non-emission region of the organic light-emitting display device **100**. Specifically, the openings of the pixel-defining layer **219** correspond to the emission region, and the areas of the pixel-defining layer **219** (without openings) correspond to the non-emission region.

In some embodiments (not shown), a planarization process may be performed on the top surface of the pixel-defining layer **219**. For example, a CVD and/or an etch-back

process may be performed on the top surface of the pixel-defining layer **219** so as to yield a substantially flat top surface.

Next, the protruding portion **223** is formed in the non-emission region of the pixel-defining layer **219**. The protruding portion **223** may be formed using an organic material or an inorganic material. The protruding portion **223** may be formed using spin coating, printing, sputtering, CVD, ALD, PECVD, HDP-CVD, or vacuum deposition, depending on the type of material that is used to form the protruding portion **223**.

In some embodiments, the protruding portion **223** may be formed of a same material as the pixel-defining layer **219**. In some embodiments, the protruding portion **223** and the pixel-defining layer **219** may be simultaneously formed using a half-tone mask.

Next, the organic emission layer **220** is formed in the opening of the pixel-defining layer **219**. In the embodiment of FIG. 3B, the organic emission layer **220** is formed in the opening of the pixel-defining layer **219**. In some other embodiments, the organic emission layer **220** may be formed on the pixel-defining layer **219** and the protruding portion **223**.

The organic emission layer **220** may be formed as a single layer or a multi-layered structure. In some embodiments, the organic emission layer **220** may be formed using vacuum deposition. Alternatively, the organic emission layer **220** may be formed using inkjet printing, spin coating, or laser-induced thermal imaging.

Next, the second electrode **222** is formed on the organic emission layer **220**. As shown in FIG. 3B, the second electrode **222** may also be formed on the pixel-defining layer **219** and the protruding portion **223**.

The second electrode **222** may be formed of a transparent conductive material. In some embodiments, the second electrode **222** may include a transparent conductive metal oxide such as ITO, IZO, ZTO, ZnO, or In₂O₃. Alternatively, the second electrode **222** may be formed of a thin film including at least one of the following elements or compounds: Li, Ca, LiF/Ca, LiF/Al, Al, Ag, Mg, or Yb. Also, the second electrode **222** may be formed as a single layer or a multi-layered structure including Mg:Ag, Ag:Yb, and/or Ag.

The second electrode **222** may be formed using sputtering, vacuum deposition, CVD, pulse laser deposition, printing, or ALD. In some embodiments, the second electrode **222** may be formed having a configuration that allows a common voltage to be applied to all pixels.

Next, a protective layer **225** may be formed on the second electrode **222**. The protective layer **225** may include a metal halide. The protective layer **225** may be deposited using thermal evaporation, PECVD, APCVD, or LPCVD. The protective layer **225** may include different materials. For example, in some embodiments, a lower portion of the protective layer **225** may include organic and inorganic materials. In some embodiments, the protective layer **225** may include LiF.

Referring to FIG. 3C, a first inorganic film **301** and a functional organic film **302** are formed over the structure of FIG. 3B. The first inorganic film **301** and the functional organic film **302** serve to encapsulate the organic light-emitting device OLED.

The first inorganic film **301** may be formed as a single layer or a multi-layered structure. The first inorganic film **301** may include at least one of the following oxides: AlOx, SiNx, SiOx, SiON, ITO, AZO, ZnO, or ZrO. The first

inorganic film **301** may be deposited using CVD, ALD, or sputtering. In some cases, the first inorganic film **301** may be omitted.

As shown in FIG. 3C, the functional organic film **302** may be formed beneath the first inorganic film **301**. In some embodiments, the functional organic film **302** may be interposed between the first inorganic film **301** and a second inorganic film **303**, as described later with reference to FIG. 3D. The functional organic film **302** is formed as follows.

First, a liquid pre-functional organic film (not shown) is coated or deposited on the first inorganic film **301**. In those embodiments in which the first inorganic film **301** is omitted, the pre-functional organic film may be coated or deposited on the organic light-emitting device (OLED). The pre-functional organic film may be coated or deposited using flash evaporation, inkjet printing, slot die coating, or other similar techniques.

The functional organic film **302** may be formed of polyacrylate. For example, the functional organic film **302** may include a high molecular monomer component comprising a monoacrylate-based monomer, diacrylate-based monomer, or a triacrylate-based monomer. In some embodiments, the monomer component of the functional organic film **302** may further include a photo-initiator such as 2,4,6-Trimethylbenzoyl-diphenyl-phosphineoxide (TPO).

The viscosity of the pre-functional organic film may be adjusted to prevent leveling of the thickness of the pre-functional organic film. The leveling is undesirable because it may increase the thickness of the organic film required to cover the protruding portion **223**. The viscosity of the pre-functional organic film may be adjusted by lowering the temperature of the substrate **21**.

The temperature of the substrate **21** may be lowered by flowing a cooling water or cooling liquid onto a stage on which the substrate **21** is placed, or by using a peltier device. In some embodiments, the viscosity of the pre-functional organic film may be adjusted by irradiating light onto the pre-functional organic film.

When the temperature of the substrate **21** is lowered, the viscosity of the pre-functional organic film increases and thus the spreadability of the pre-functional organic film decreases. Thus, the pre-functional organic film remains on the upper surface of the protruding portion **223**. In addition, the pre-functional organic film hardens in this state, thereby forming the functional organic film **302** (having the first thickness t_1) on the upper surface of the protruding portion **223**. The temperature of the substrate **21** and the length of time that is required to harden the pre-functional organic film may be determined based on the desired viscosity of the pre-functional organic film. Accordingly, by adjusting the viscosity of the pre-functional organic film, a liquid pre-functional organic film having a predetermined thickness may be formed (as the functional organic film **302**) on the upper surface of the protruding portion **223**.

When the pre-functional organic film includes a photo-initiator, the viscosity of the pre-functional organic film may be adjusted by irradiating light onto the pre-functional organic film. When light is irradiated onto the pre-functional organic film, a cross-linking reaction may occur, which increases the viscosity of the pre-functional organic film. Subsequently, the pre-functional organic film hardens, thereby forming the functional organic film **302** (having the first thickness t_1) on the upper surface of the protruding portion **223**. The viscosity of the pre-functional organic film may be adjusted based on the wavelength and/or intensity of the irradiated light.

Referring to FIG. 3D, a thin film encapsulating layer **30** is formed over the structure of FIG. 3C. The thin film encapsulating layer **30** includes an organic film **320** and an inorganic film **310**. It should be noted that the thin film encapsulating layer **30** can include a plurality of organic films **320** and inorganic films **310**. The thin film encapsulating layer **30** is formed by alternately stacking second, third, and fourth inorganic film **303**, **305**, and **307**, and first and second organic film **304** and **306** on the functional organic film **302**.

Each of the second, third, and fourth inorganic films **303**, **305**, and **307** may be formed as a single layer or multi-layered structure. Each of the inorganic films **303**, **305**, and **307** may include at least one of the following oxides: AlOx, SiNx, SiOx, SiON, ITO, AZO, ZnO, or ZrO. The inorganic films **303**, **305**, and **307** may be deposited using CVD, ALD, sputtering, or other similar techniques.

Each of the first and second organic films **304** and **306** may be formed as a single layer or a multi-layered structure. Each of the organic films **304** and **306** may include at least one of epoxy, acrylate, silicon, and polyacrylate. The first and second organic films **304** and **306** may be coated or deposited using flash evaporation, inkjet printing, slot die coating, or other similar techniques.

As shown in FIG. 3D, the fourth inorganic film **307** constitutes the uppermost layer of the thin film encapsulating layer **30** that is exposed to the ambient environment. The fourth inorganic film **307** prevents air and moisture from reaching the organic light-emitting device OLED. Accordingly, the organic light-emitting device OLED is effectively sealed by the thin film encapsulating layer **30**.

In the embodiment of FIG. 3D, the fourth inorganic film **307** is formed of an inorganic material. Nevertheless, in some other embodiments, the uppermost layer of the thin film encapsulating layer **30** (that is exposed to the ambient environment) may be formed of an organic material.

FIG. 4 is a cross-sectional view of an organic light-emitting display apparatus according to another embodiment of the inventive concept. The embodiment in FIG. 4 includes elements similar to those described in FIG. 2, and thus description of those similar elements shall be omitted.

Referring to FIG. 4, the organic light-emitting display apparatus **200** includes a thin film encapsulating layer **31**. The thin film encapsulating layer **31** includes an inorganic film **330** and an organic film **340**. The inorganic film **330** and the organic film **340** of FIG. 4 may be formed using the same materials and methods as the inorganic film **310** and the organic film **320** of FIG. 2. The inorganic film **330** includes a first inorganic film **311**, a second inorganic film **313**, a third inorganic film **315**, and a fourth inorganic film **317**. The organic film **340** includes a first organic film **312**, a functional organic film **314**, and a second organic film **316**. As shown in FIG. 4, the films in the inorganic film **330** and the organic film **340** are sequentially stacked together.

The first inorganic film **311**, the first organic film **312**, and the second inorganic film **313** are disposed beneath the functional organic film **314**. Referring to FIG. 4, a height h is measured from a top surface of a planarization film **218** to a first upper surface of the functional organic film **314** disposed away from a protruding portion **223**. A height H is measured from the top surface of the planarization film **218** to a second upper surface of the functional organic film **314** above the top of a protruding portion **223**. The functional organic film **314** is formed having a second thickness t_2 above the top of the protruding portion **223**.

As shown in FIG. 4, the height h may be less than the height H . In other words, the height h of the first upper

15

surface of the functional organic film **314** disposed away from the protruding portion **223** is lower than the height **H** of the second upper surface of the functional organic film **314** disposed above the top of the protruding portion

However, the difference between the heights **h** and **H** in the embodiment of FIG. **4** is less than that of FIG. **2**. Referring back to FIG. **2**, the top of the protruding portion **223** protrudes above the first upper surface of the functional organic film **302**. In contrast to FIG. **2**, the top of the protruding portion **223** in FIG. **4** is disposed below the first upper surface of the functional organic film **314**. Nevertheless, the protruding portion **223** in FIG. **4** remains covered by the functional organic film **314**, similar to FIG. **2**.

Referring to FIG. **4**, the second thickness **t2** may be adjusted such that the third inorganic film **315** (which is formed on the functional organic film **314**) does not come into contact with the second inorganic film **313**, even when a defect (e.g., a mask stab) occurs during fabrication of the functional organic film **314**. In some embodiments, the second thickness **t2** may be equal to or greater than about 100 Å. For example, the second thickness **t2** may have a value ranging between about 100 Å and about 500 Å. In some embodiments, the second thickness **t2** may have a value that is equal to or less than a thickness of a substantially planar portion of the functional organic film **314** above the top of the protruding portion **223**. Also, the second thickness **t2** may vary depending on the number (of) and thicknesses of the films in the thin film encapsulating layer **31**, as well as the height of the protruding portion **223**.

Referring to FIG. **4**, the second organic film **316** constitutes the uppermost organic film of the organic light-emitting display apparatus **200**. A planarization process may be performed on the second organic film **316** so as to yield a substantially planar surface.

In the embodiments of FIGS. **2** and **4**, the thin film encapsulating layer **31** includes a single functional organic film. Nevertheless, it should be noted that in some embodiments, the thin film encapsulating layer **31** may include a plurality of functional organic films.

FIG. **5** is a cross-sectional view of an organic light-emitting display apparatus according to a further embodiment of the inventive concept. The embodiment in FIG. **5** includes elements similar to those described in FIG. **2**, and thus description of those similar elements shall be omitted.

Referring to FIG. **5**, the organic light-emitting display apparatus **300** includes a thin film encapsulating layer **32**. The thin film encapsulating layer **32** includes an inorganic film **350** and a functional organic film **360**. The thin film encapsulating layer **32** also includes foreign particles **41** and **42**. The inorganic film **350** and the organic film **360** of FIG. **5** may be formed using the same materials and methods as the inorganic film **310** and the organic film **320** of FIG. **2**. The inorganic film **350** includes a first inorganic film **321**, a second inorganic film **323**, and a third inorganic film **325**. The functional organic film **360** includes a first functional organic film **322** and a second functional organic film **324**. As shown in FIG. **5**, the films in the inorganic film **350** and the organic film **360** are sequentially stacked together, with the foreign particles **41** and **42** interposed between adjacent films. It should be noted that in some embodiments, more particles can be encapsulated by having more than one functional organic film.

The organic light emitting display apparatus **300** also includes a spacer **231** having the same function as the protruding portion **223** of FIG. **2**. The spacer **231** may be formed using the same materials and methods as the protruding portion **223** of FIG. **2**.

16

In the embodiment of FIG. **5**, the protruding portions include the foreign particles **41** and **42**, and the spacer **231**. As shown in FIG. **5**, the foreign particles **41** and **42** may protrude above the spacer **231**.

The first functional organic film **322** may be formed having a third thickness **t3** above an upper surface of the foreign particle **41**.

The second functional organic film **324** may be formed having a fourth thickness **t4** above an upper surface of the foreign particle **42**.

The third thickness **t3** and the fourth thickness **t4** may be different from each other, and may be adjusted by adjusting the respective viscosities of the first functional organic film **322** and the second functional organic film **324**. Similar to the embodiments in FIGS. **2** and **4**, the first functional organic film **322** and the second functional organic film **324** in FIG. **5** may be formed of materials having viscosities that are adjustable using light or temperature.

Thus, although the organic light-emitting display apparatus **300** may include the foreign particles **41** and **42**, the foreign particles **41** and **42** are nonetheless covered by the first functional organic film **322** and the second functional organic film **324**. Accordingly, the organic light emitting device OLED in FIG. **5** remains effectively sealed by the thin film encapsulating layer **32**.

The thin film encapsulating layer **32** of FIG. **5** may be modified in different ways. For example, in some embodiments, the thin film encapsulating layer **32** may have a structure in which only the first functional organic film **322** and the second inorganic film **323** are stacked together. In some other embodiments, the thin film encapsulating layer **32** may further include an additional organic film and/or an additional inorganic film interposed between the films.

It should be understood that the embodiments described above are to be considered in a descriptive sense, and should not be construed as limiting the inventive concept. Descriptions of features or aspects within each embodiment are generally applicable to similar features or aspects in other embodiments.

While one or more embodiments of the inventive concept have been described, it will be understood by those of ordinary skill in the art that various changes may be made to the embodiments without departing from the spirit and scope of the present disclosure.

What is claimed is:

1. An organic light-emitting diode (OLED) display, comprising:

- a substrate;
 - a thin film transistor (TFT) over the substrate;
 - an insulating layer covering the TFT;
 - a pixel-defining layer over the insulating layer, wherein the pixel-defining layer defines an emission region and a non-emission region, the pixel-defining layer comprises an opening corresponding to the emission region;
 - a first electrode between the insulating layer and the pixel-defining layer, the first electrode corresponding to the opening;
 - an organic emission layer over the first electrode in the non emission region;
 - a second electrode on the organic emission layer;
 - a protruding portion over the pixel-defining layer; and
 - a thin film encapsulating layer covering the protruding portion and the second electrode, the thin film encapsulating layer comprising at least one inorganic layer and at least one organic layer,
- wherein the at least one organic layer covers a first region in which the insulating layer, the pixel-defining layer,

17

- and the protruding portion overlapping each other, and a second region corresponding to a center region of the first electrode,
- a first height from the insulating layer to an upper surface of the at least one organic layer in the first region is greater than a second height from the insulating layer to the upper surface of the at least one organic layer in the second region, and
- wherein an uppermost inorganic encapsulation layer of the at least one inorganic layer included in the thin film encapsulating layer has a substantially flat upper surface.
2. The OLED display of claim 1, wherein the thin film encapsulating layer comprises an organic encapsulation layer directly below the uppermost inorganic encapsulation layer, the organic encapsulation layer has a substantially flat upper surface.
3. The OLED display of claim 1, wherein the at least one organic layer comprising a first portion corresponding to the first region and a second portion corresponding to the second region, a first thickness of the first portion being smaller than a second thickness of the second portion.
4. The OLED display of claim 1, wherein the protruding portion comprises a spacer.
5. The OLED display of claim 4, the spacer directly on and contact the upper surface of the pixel-defining layer.
6. The OLED display of claim 5, wherein each of the pixel-defining layer and the spacer comprises an organic material.
7. The OLED display of claim 4, wherein the second electrode covers the protruding portion.
8. The OLED display of claim 4, further comprising a LiF layer between the second electrode and the thin film encapsulating layer.
9. The OLED display of claim 1, wherein the protruding portion comprises foreign material.
10. The OLED display of claim 1, wherein the at least one organic layer comprises a material having a viscosity that is adjustable by light or temperature.
11. An organic light-emitting diode (OLED) display, comprising:
- a substrate;
 - a thin film transistor over the substrate (TFT);
 - an insulating layer over the TFT;
 - an OLED including a first electrode electrically connected to the TFT via a contact hole of the insulating layer, an organic emission layer on the first electrode, and a second electrode on the organic emission layer;

18

- a pixel-defining layer over the first electrode, the pixel-defining layer comprising an opening corresponding to the first electrode;
- a protruding portion on the pixel-defining layer; and
- a film encapsulating layer over the OLED and the protruding portion, the film encapsulating layer comprising at least one inorganic encapsulation layer and at least one organic encapsulation layer,
- wherein the at least one organic encapsulation layer comprising a first portion and a second portion, the first portion covering a first region in which the insulating layer, the pixel-defining layer, and the protruding portion overlapping each other, and the second portion covering a second region corresponding to a center region of the first electrode,
- wherein an uppermost inorganic encapsulation layer of the at least one inorganic encapsulation layer included in the film encapsulating layer has a substantially flat upper surface.
12. The OLED display of claim 11, wherein the film encapsulating layer comprises an organic encapsulation layer below the uppermost inorganic encapsulation layer, the organic encapsulation layer has a substantially flat upper surface.
13. The OLED display of claim 11, wherein a first thickness of the first portion being smaller than a second thickness of the second portion.
14. The OLED display of claim 11, wherein a first height from the insulating layer to the first portion is greater than a second height from the insulating layer to the second portion.
15. The OLED display of claim 11, wherein a lowermost layer of the film encapsulating layer comprises an inorganic encapsulation layer facing the second electrode.
16. The OLED display of claim 15, further comprising a protective layer between the second electrode and the lowermost layer.
17. The OLED display of claim 16, wherein the protective layer comprises lithium fluoride (LiF).
18. The OLED display of claim 11, wherein the protruding portion comprises a spacer.
19. The OLED display of claim 18, wherein the spacer comprises an organic material.
20. The OLED display of claim 11, wherein the protruding portion comprises foreign material.

* * * * *

提供了一种有机发光显示装置。该显示装置包括：像素限定层，其设置在基板上，其中，像素限定层限定发光区域和非发光区域；有机发光装置，其设置在该发光区域中；以及突出部，其设置在发光区域中。在非发光区域中像素限定层的一部分。该显示装置还包括设置在基板上的用于密封有机发光器件和突出部分的薄膜封装层，该薄膜封装层包括至少一个有机膜和至少一个无机膜，其中至少一种有机膜。膜对应于功能有机膜，并且远离凸起部分布置的功能有机膜的第一上表面的高度低于布置在凸起部分的顶部附近的功能有机膜的第二上表面的高度。。

